

# OUR MOST SPACE EFFICIENT HOME LIFT

## Aritco HomeLift Compact Datasheet 2023

Sometimes great things come in small packages. Our most space-efficient lift, the Aritco HomeLift Compact, opens up a world of possibilities in homes that were previously considered too limited in space. With its modern design, customizable features, and connectivity, the home lift offers the advantages of being small combined with the ability to think big.

Aritco HomeLift Compact comes with a unique Aritco Scandinavian design; a sleek platform design including a DesignWall and control panel with integrated handrail, double doors and contemporary and flexible shaft glass solutions.



ADELAIDE LIFTS P/L

North Plympton, S.A. 5037

T: 0403 833 533  
E: [info@adelaidelifts.com.au](mailto:info@adelaidelifts.com.au)  
W: [adelaidelifts.com.au](http://adelaidelifts.com.au)

# Explore

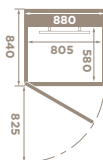
## Aritco HomeLift Compact

### Key features

The lift also serve you several customization possibilities. You can choose from more than 200 different colors, 2 different glass types, 8 different floorings and a DesignWall (backwall) with 8 different artworks. The lift is also connected digitally and via the SmartLift App the user can get valuable information about the status of the lift and when the lift needs service. The lift is also equipped with our SmartSafety system, with safety features, to meet all situations that can occur in a home, to prevent accidents.

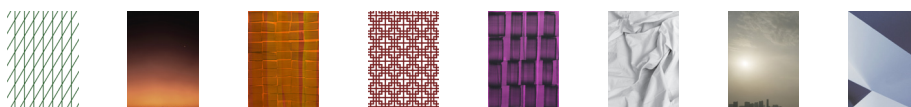


### Sizes



MODEL	CARRIER SIZE	EXTERIOR DIMENSIONS	RATED LOAD
1	580 x 805 mm	840 x 880 mm	250 kg / 2 persons
2	880 x 805 mm	1140 x 880 mm	250 kg / 2 persons
3	1080 x 805 mm	1340 x 930 mm	250 kg / 2 persons

### DesignWall



### Lift color

Comes in three standard colors, Traffic White (RAL9016), Jet Black (RAL 9005) and Anthracite Grey (RAL7016). Can be painted in any RAL color from the RAL K7 classic chart (Except for pearl and fluorescent colors)



### Glass

STANDARD  
Clear glass



OPTIONAL  
Tinted



### Floor



### Intended use

Home lift intended for transportation of persons in buildings where the users are known. Indoor installation environments

### Technical compliance

European Machine Directive 2006/42/EC  
European Standard EN 81-41

### Drive system

Patented screw-and-nut system

### Rated speed

Max 0.15 m/s

### Emergency lowering

Battery-powered

### Travel height

1 600 - 15 000 mm

### Top height

Always 2 248 mm

### Number of floors

2 to 6 floors

### Installation

Recessed installation 50 mm below floor level  
Installed directly on floor with 50 mm ramp

### Operation

Hold to run (press and hold)

### Power supply

230 V 1-phase

### Warranty

Aritco HomeLift Compact comes with a 5-year warranty.  
The screw-and-nut assembly has a 10-year warranty

